

# HID<sup>®</sup> Facial Recognition Solution Components

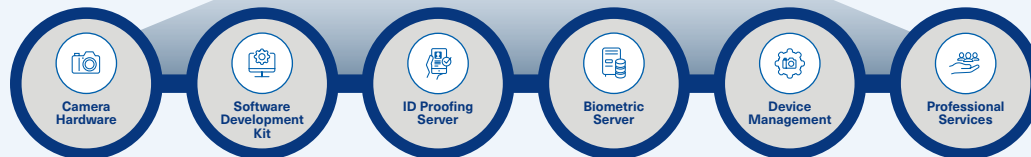
## A MODULAR APPROACH FOR EASIER, FASTER AND MORE FLEXIBLE DEPLOYMENT

HID's facial recognition solution offers a component-based approach to maximize flexibility and accelerate deployment. The modular offerings include hardware, software and professional services. This approach enables customers to implement solutions on their own timing as future requirements and budgets allow, without having to rip-and-replace or completely migrate to a new platform.

HID has invested and partnered with Paravision<sup>®</sup> — a leader in AI and computer vision — to embed its best-in-class, core facial-matching algorithm into HID's facial recognition solution components.



### Modular Solution Approach





## **HID U.ARE.U™ CAMERA IDENTIFICATION SYSTEM**

The HID U.ARE.U camera identification system enables best-in-class facial recognition, identification and verification, with industry-leading passive liveness security. Multispectral imaging (MSI) technology, artificial intelligence (AI), machine learning and AI computing

combine to produce a camera with superior performance in any lighting setting, from bright sunlight to limited or no-light conditions.

### **KEY FEATURES INCLUDE:**

- Multispectral imaging (MSI) technology fused with AI
- High performance in challenging lighting conditions
- Face capture & quality assessment
- 1:1 & 1:N matching; matching at the edge (on device)
- Advanced presentation attack detection (PAD), meeting ISO 30107-1 standards

## **HID U.ARE.U FACE SOFTWARE DEVELOPMENT KITS (SDKS)**

HID offers complete facial recognition SDKs for Windows®, Linux®, Android® and iOS®, with 1:1/1:N matching, liveness detection, image quality analysis and template extraction. Our SDKs enable companies to add facial recognition capabilities into existing applications or cameras with low development risks.

### **KEY FEATURES INCLUDE:**

- Face capture & quality assessment
- 1:1 & 1:N matching; matching at the edge
- Mobile SDKs (iOS & Android), with optional document capture workflow when used with HID ArcID ID Proofing Server
- Windows® & Linux® SDKs
- Edge-based presentation attack detection (PAD)

## **HID ARCID ID PROOFING SERVER**

The HID ArcID ID Proofing Server enables the addition of electronic Know Your Customer (eKYC) workflows, business rules and ID document verification to the mobile enrollment process for true identity confirmation. The server authenticates the government-issued ID and validates that the person registering into the system matches the person on the ID, ensuring accuracy and eKYC compliance.

### **KEY FEATURES INCLUDE:**

- eKYC workflows & business rules
- Supports mobile SDKs (iOS & Android)
- Integrates with HID ArcID Biometric Server for seamless enrollment
- Document authentication & data extraction (OCR)
- On-premise or cloud deployment
- Server-based presentation attack detection (PAD)



## HID ARCID BIOMETRIC SERVER

Designed with speed, accuracy and security in mind, the HID ArcID Biometric Server supports full facial recognition functionality — including the ability to perform 1:1/1:N matching, manage biometric records, and import and export records to and from secure endpoints. The server is highly scalable and can be hosted either on-premise or in the cloud.

### KEY FEATURES INCLUDE:

- Biometric server API
- Template extraction
- 1:1 & 1:N matching
- Storage of galleries
- Connectors to other identity management apps or databases
- Deduplication
- On-premise or cloud deployment
- Confidentiality, integrity and privacy by design

## HID ARCID DEVICE MANAGER

The HID ArcID Device Manager is a software application that connects to HID's hosted services to provide a user-friendly interface and protocol to manage the provisioning, software updates and security of the ArcID Biometric Server and the U.ARE.U camera. It remotely monitors all camera hardware status on all sites and can export information to easily create reports.

### KEY FEATURES INCLUDE:

- Manages provisioning, updates and security of distributed camera hardware
- Monitors the hardware status and reporting

## HID BIOMETRIC PROFESSIONAL SERVICES

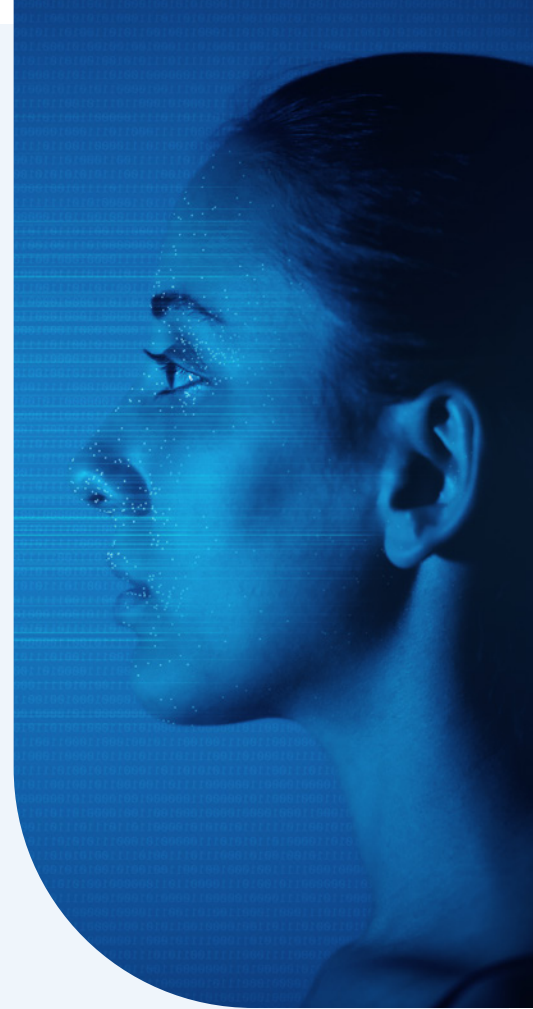
HID Professional Services plays an important role in the overall HID experience. Involved from the solution sales cycle to production roll-out, the professional services team supports your organization by assisting with the overall solution design, component integration, performance testing and project management while also ensuring that you have the relevant expert technical resources available to ensure the success of your project.

The services are designed to drive financial benefits for your business by managing delivery risk and truly maximizing the power of your investment.

### SERVICES INCLUDE:

- Program Management
- Assessment
- Solution Design
- Deployment
- Maintenance & Support

For more information about HID's facial recognition offerings, [please visit our website >>](#)



*"HID has invested and partnered with Paravision® — a leader in AI and computer vision — to embed its best-in-class, core facial-matching algorithm into HID's facial recognition solution components."*



hidglobal.com

North America: +1 512 776 9000 | Toll Free: 1 800 237 7769  
Europe, Middle East, Africa: +44 1440 714 850  
Asia Pacific: +852 3160 9800 | Latin America: +52 (55) 9171-1108

**For more global phone numbers click here**

© 2023 HID Global Corporation/ASSA ABLOY AB. All rights reserved.

2023-03-10-eat-facial-recognition-components-xb-en PLT-06668

Part of ASSA ABLOY